

GCP 2.0 - Quick Start Guide

1. Use the supplied Ethernet cable to connect your device to your router or modem.
2. Use the power supply provided to power up your device. Connect the power cable to the USB-C port on the device (#2 in the appendix below) then plug the power adapter into a wall socket.
3. Complete the following steps to register and activate your device:
 - a. To register your device visit <https://gcp2.net/reg>

Enter the case-sensitive “ID” shown on your device screen into the “Device ID” field on the registration form. Then fill out the rest of the fields with your personal information, including a password of your choosing and the physical address where the device will be located.

Once you have completed your entries click on “Register and Send Activation Code” to register yourself and your device and to proceed to the Activation screen.



Note: If the display turns off (power save mode), it can be turned back on at any time by pressing the “DISP CYCLE” button to the left of the display (#3 in the appendix below).

Congratulations!

You've ordered and received your NextGen RNG!
Time to get it online!

Read First → Quick Start Guide

Please note: if you are trying to register multiple devices or were previously unsuccessful in activating your device, you will need to log in before registering your device.

Register Your NextGen RNG

Device ID (12 chars) ← Enter the ID number displayed on your device

Physical address where this device is installed

Address Line 1

Address Line 2 (optional)

Country

City

State or Province

Postal Code

Register And Send Activation Code → ← Click to register your device and proceed to the Activation screen

- b. A 6-digit "Activation Code" will be sent to your device and will appear on the device display screen.



Enter the 6-digit "Activation Code" displayed on your device into the "Activation Code" box provided on the website, then click on "Activate" to complete the activation process.

Almost done!

Device ID: b48a0ab96f9b

Your device screen will show a 6-digit "Activation Code" shortly.

Enter the 6-digit code below, then click on Activate and your device will start sending data to the network!

Enter the "Activation Code" displayed on your device

Click to activate your device

Activation Code

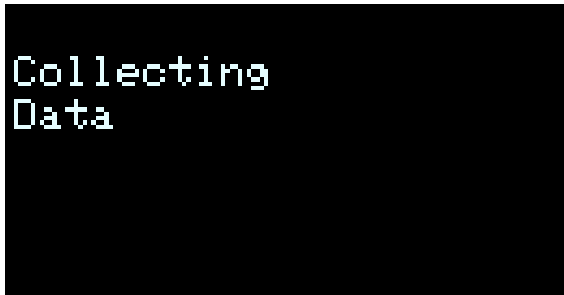
[Activate ↗](#)

Successful Activation!

Welcome to the GCP 2.0 Citizen-Scientist program!

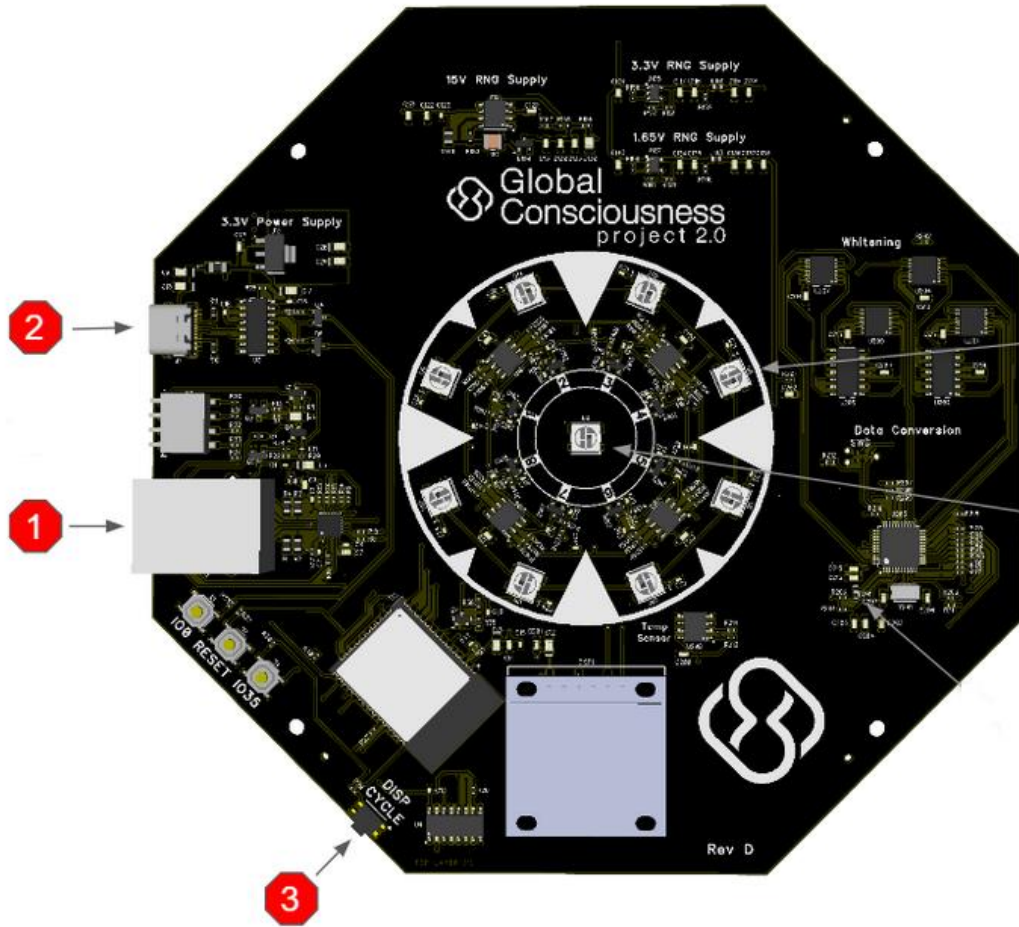
If you need to change the address where your device is located, you will need to log in using the email address and password you entered when you registered your device.

4. After approximately 7 minutes the device should display the “Collecting Data” screen. This indicates that the device is working properly and sending data to the GCP 2.0 network!



5. The preferred location for your RNG is somewhere where normal temperature fluctuations are minimized as much as possible. For example, don't put it in or near a window or heating/cooling vent where direct sunlight, radiant heat or cold drafts could cause large temperature swings. Also do not locate near large electrical appliances like an air conditioner, microwave oven etc. Find some quiet corner where it won't be disturbed but you can still glance at it once in a while to make sure it is still on and there are no red attention LEDs flashing.

Appendix



1. Ethernet port - Connects to a Modem, Router, or Switch
2. Power port (USB-C) - Connects to CanaKit 3.5A Power Supply Only (provided)
3. DISP CYCLE button - Toggles between a Status screen and Hardware Information screen